
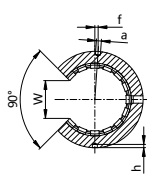
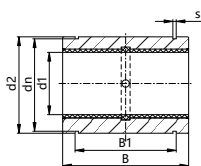



LIN 直线滑动轴承

开口式阳极氧化铝适配器

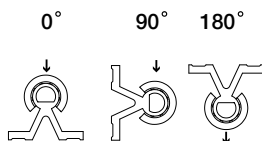
 产品代码



LIN-01RK-10

 直径
开口式外壳
长系列

- 适用于支撑轴
- 尺寸与标准的滚珠轴承一致
- 根据客户要求可提供非标制作



技术参数

产品代码	轴 ∅ [mm]	公差 轴承内圈 直径 [mm]	F 最大值 [N]			F 最大值 [N]			重量 [g]
			动态			静态			
			0°	90°	180°	0°	90°	180°	
LIN-01RK-10	10	+0.030 +0.088	725	500	196	5075	3500	1370	11
LIN-01RK-12	12	+0.030 +0.088	960	635	240	6720	4445	1680	15
LIN-01RK-16	16	+0.030 +0.088	1440	990	396	10080	6943	2772	21
LIN-01RK-20	20	+0.030 +0.091	2250	1800	900	15750	12600	6300	42
LIN-01RK-25	25	+0.030 +0.091	3625	2953	1523	25375	20670	10658	70
LIN-01RK-30	30	+0.040 +0.110	5100	4250	2278	35700	29735	15946	132
LIN-01RK-40	40	+0.040 +0.115	8000	6810	3800	56000	47660	26660	278
LIN-01RK-50	50	+0.050 +0.130	12500	10750	6125	87500	75265	42875	479

尺寸 [mm]

产品代码	d1	d2	B	W	a	dn	B1	s	f	h
LIN-01RK-10	10	19	29	7,3	0,0	17.5	21.6	1.3	0	1.2
LIN-01RK-12	12	22	32	9,0	3,0	20.5	22.6	1.3	1.33(7°)	1.2
LIN-01RK-16	16	26	36	11,6	2,2	24.2	24.6	1.3	0	1.2
LIN-01RK-20	20	32	45	12,0	2,2	29.6	31.2	1.6	0	1.2
LIN-01RK-25	25	40	58	14,5	3,0	36.5	43.7	1.85	-1.5(-4.3°)	1.5
LIN-01RK-30	30	47	68	16,6	3,0	43.5	51.7	1.85	2(4.9°)	2
LIN-01RK-40	40	62	80	21,0	3,0	57.8	60.3	2.15	1.5(2.8°)	2
LIN-01RK-50	50	75	100	25,5	5,0	70.5	77.3	2.65	2.5(3.8°)	2

可配合:



LIN-01RQK



LIN-06RK



LIN-01QSK

可配合的滑动膜:



LIN-E01K



LIN-01K