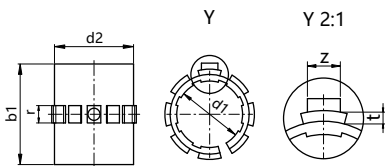


# LIN 直线滑动膜

封闭式，短型设计



产品代码



**LIN-02-10**



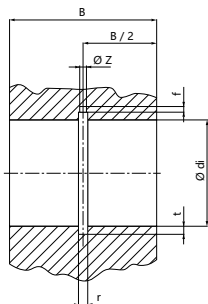
● 也提供小间隙系列 (LIN-12)

尺寸 [mm]

产品代码	d1	公差	d2	b1	r	t	z	F 最大值	F 最大值	重量
								动态 P=5MPa[N]	静态 P=35MPa[N]	
LIN-02-10	10	+0.030+0.070	12	25	3	0.8	2.5	650	4,550	1.02
LIN-02-12	12	+0.030+0.070	14	27	3	0.8	3	840	5,880	1.27
LIN-02-16	16	+0.030+0.070	18	29	3.5	0.8	3.5	1,200	8,400	1.82
LIN-02-20	20	+0.030+0.070	23	29	5	0.8	3.5	1,500	10,500	3.27
LIN-02-25	25	+0.030+0.070	28	39	5	0.8	4	2,500	17,500	5.75
LIN-02-30	30	+0.040+0.085	34	49	5	0.8	4	3,750	26,250	11.28
LIN-02-35	35	+0.040+0.085	44	59	6	1.3	5	6,000	42,000	17.94
LIN-02-40	40	+0.040+0.085	50	59	7	1.3	6.1	7,200	50,400	27.00
LIN-02-50	50	+0.050+0.100	55	69	7	1.3	6	8,750	61,250	32.56

装配图 适用于滑动膜 LIN-02 的基座孔 尺寸 [mm]

产品代码	轴 ∅	di H7	B h10	r	t	f	z
LIN-02-10	10	12	26	3.0	1.0	1.0	2.6
LIN-02-12	12	14	28	3.0	1.0	1.5	3.1
LIN-02-16	16	18	30	3.5	1.0	1.7	3.6
LIN-02-20	20	23	30	5.0	1.0	2.0	3.6
LIN-02-25	25	28	40	5.0	1.0	2.0	4.1
LIN-02-30	30	34	50	5.0	1.0	2.0	4.1
LIN-02-35	35	39	60	6.0	1.5	2.5	5.1
LIN-02-40	40	44	60	7.0	1.5	2.5	6.1
LIN-02-50	50	55	70	7.0	1.5	2.5	6.1



可配合:



LIN-02R



LIN-05R/LIN-05RE  
LIN-05RL



LIN-02RFL  
LIN-02RTL