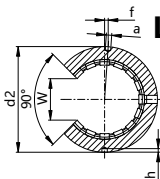
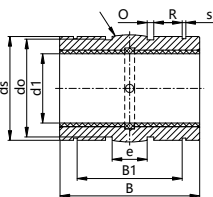


LIN 直线滑动轴承

开口式阳极氧化铝适配器，浮动式



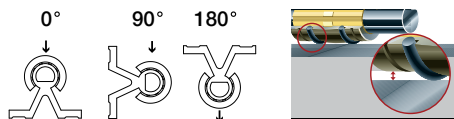
产品代码



LIN-03RK-10



直径
开口式
自动调心外壳



- 外径减小，在外径面有圆形区域，○型圈用做弹性滑块，硬质阳极氧化铝表面
- 根据客户要求可以提供非标制作

技术参数

产品代码	轴 ∅ [mm]	基座孔 H7 [mm]	公差 轴承内圈 直径 [mm]	F 最大值 动态 P=5MPa			F 最大值 静态 P=35MPa			重量 [g]
				0°	90°	180°	0°	90°	180°	
LIN-03RK-10	10	19	+0.030 +0.088	725	500	196	5,075	3,500	1,370	10
LIN-03RK-12	12	22	+0.030 +0.088	960	635	240	6,720	4,445	1,680	13
LIN-03RK-16	16	26	+0.030 +0.088	1,440	990	396	10,080	6,943	2,772	19
LIN-03RK-20	20	32	+0.030 +0.091	2,250	1,800	900	15,750	12,600	6,300	38
LIN-03RK-25	25	40	+0.030 +0.091	3,625	2,953	1,523	25,375	20,670	10,658	63
LIN-03RK-30	30	47	+0.040 +0.110	5,100	4,250	2,278	35,700	29,735	15,946	119
LIN-03RK-40	40	62	+0.040 +0.115	8,000	6,810	3,800	56,000	47,660	26,600	250
LIN-03RK-50	50	75	+0.050 +0.130	12,500	10,750	6,125	87,500	75,265	42,875	431

尺寸 [mm]

产品代码	d1	d2	ds	e	o	do	B1	s	B	R	W	a	f	h
	h7	H10			+0.1		H10	H10	h10		-1	+0.1	±0.2	-0.5
LIN-03RK-10	10	18.8	18.5	5	1.86	15.4	21.8	1.3	28.9	13	7.3	0	0	1.2
LIN-03RK-12	12	21.8	21.5	6	1.86	18.4	22.8	1.3	31.9	18	9	3	1.33(7°)	1.2
LIN-03RK-16	16	25.8	25.5	8	2.86	20.4	24.9	1.3	35.9	32	11.6	2.2	0	1.2
LIN-03RK-20	20	31.8	31.5	10	2.86	26.4	31.5	1.6	44.8	50	12	2.2	0	1.2
LIN-03RK-25	25	39.8	39.0	12.5	2.86	34.4	44.1	1.85	57.8	39	14.5	3	-1.5(-4.3°)	1.5
LIN-03RK-30	30	46.7	46.0	15	2.86	41.4	52.1	1.85	67.8	57	16.6	3	2(4.9°)	2
LIN-03RK-40	40	61.7	61.0	20	2.86	56.4	60.9	2.15	79.8	100	21	3	1.5(2.8°)	2
LIN-03RK-50	50	74.7	74.0	25	2.86	69.4	78	2.65	99.8	157	25.5	5	2.5(3.8°)	2

可配合:



LIN-01RQK



LIN-06RK



LIN-06RKL



LIN-01QSK



LINE-01



LIN-01

可配合的滑动膜: